



Octave HS-1 Technical Specifications

Package Contents

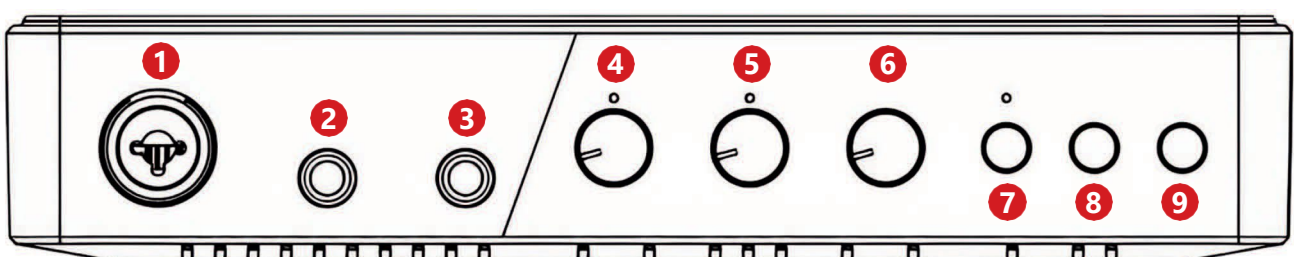
- Octave HS-1 Windows 11 VST Player, DAW and Audio Recording Interface
- Power Adapter (36W)
- USB-C Cable
- 4+4 Button Bluetooth Footswitch
- EVA Plastic Carrying Case

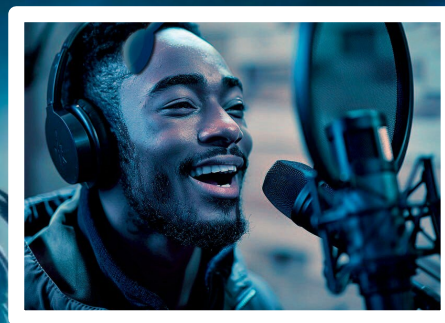
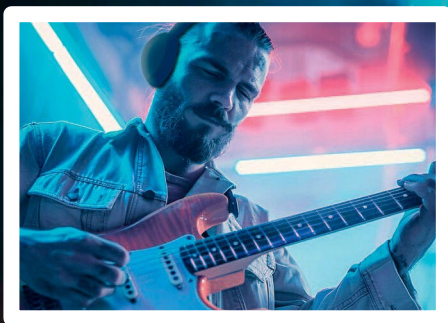
Technical Specifications

- Processor: Intel N5095 (11th Generation)
- RAM: 16GB
- Storage: 256GB NVMe M.2 SSD
- Operating System: Modified Windows 11 24H2
- Inputs: 1 x XLR Combo Jack, 1 x Hi-Z Instrument Input
- Outputs: 2 x 1/4" Unbalanced Mono Outputs
- Headphone Output: 1 x 1/4" Stereo Jack
- USB Ports: 1 x USB-C (Power), 1 x USB-C Fully Functional Port, 2 x USB 3.0 (Rear Panel), 2 x USB 3.0 (Right Panel)
- Mini SD Card Slot: Up to 1TB
- Phantom Power: +48V
- Video Output: HDMI
- Network: Ethernet, Wi-Fi
- Bluetooth Footswitch: 4+4 Button Configuration
- LCD Screen: 10.1-Inch Full HD
- Battery: 4900mAh Removable Battery

Front Panel

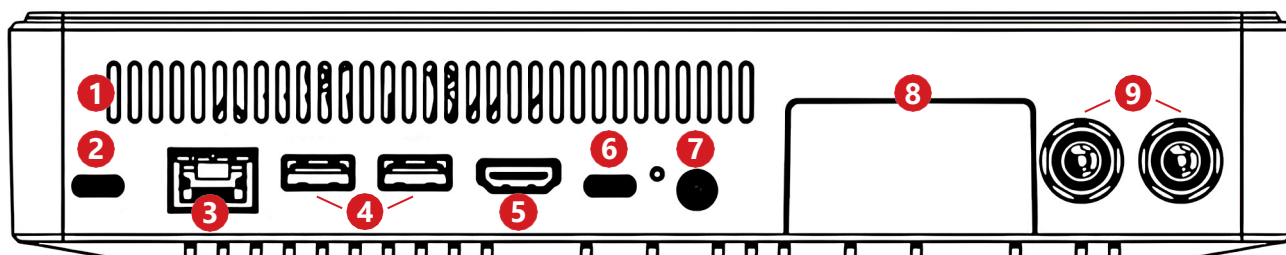
1. XLR Combo Input (1): For connecting microphones or line-level devices.
2. Hi-Z Instrument Input (2): For connecting instruments such as guitars.
3. Headphone Output: Connects headphones for monitoring.
4. Gain Knob for Input One: Adjusts the input level for the XLR combo input.
5. Gain Knob for Input Two: Adjusts the input level for the Hi-Z instrument input.
6. Volume Knob: Adjusts the overall output volume.
7. 48V Phantom Power Switch: Activates phantom power for the XLR combo input (Red LED: active. Orange LED: deactivated).
8. Input Selector Switch: Chooses between Hi-Z or Mic input for the second input.
9. Direct Monitoring Switch: Enables direct monitoring for zero-latency input monitoring.





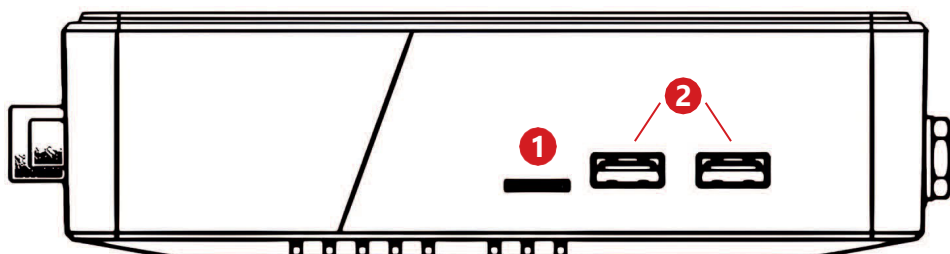
Rear Panel

1. Air Vent
2. USB-C Power Input: Connect the power adapter (36W).
3. Ethernet Port: Connect to wired networks.
4. USB Ports: Two USB 3.0 ports.
5. HDMI Port: Connect to a monitor or TV.
6. USB-C Fully Functional Port: Additional USB-C port for connecting peripherals like an extra LCD screen, USB memory sticks, an external PD 3.0 power bank, etc.).
7. Power ON Button and LED Indicator: Display the status of the PC (Blue - fully charged, Purple – charging in Windows, Red – charging when power is off).
8. Battery Compartment: 4900mAh removable battery.
9. Line Outputs (1-2): Unbalanced ¼-inch L/R mono outputs for connecting studio monitors or external gear.



Right Panel

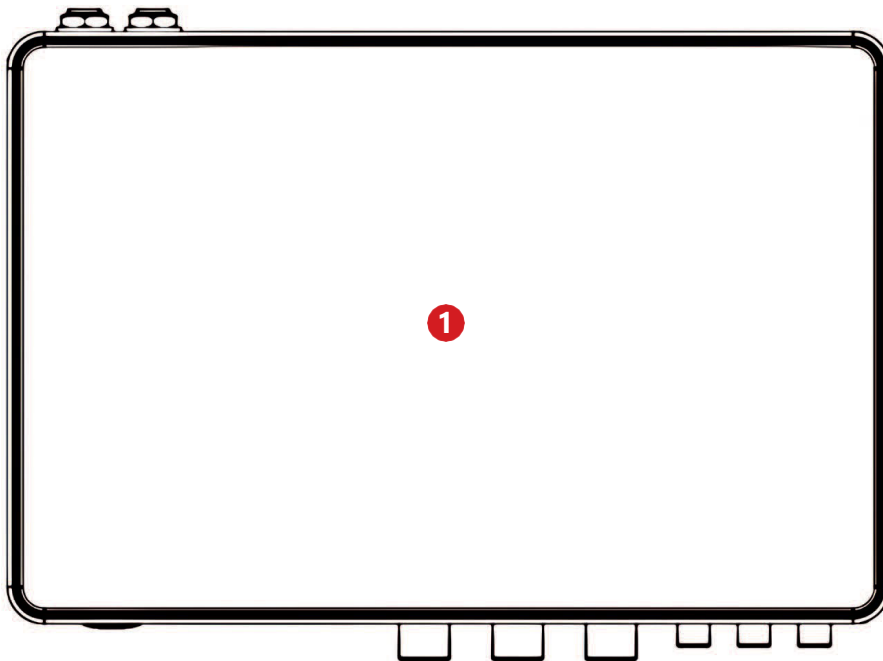
1. Mini SD Card Slot: Insert a Mini SD card (up to 1TB) for additional storage.
2. USB 3.0 Ports (2): For connecting additional peripherals such as external storage devices or MIDI controllers.





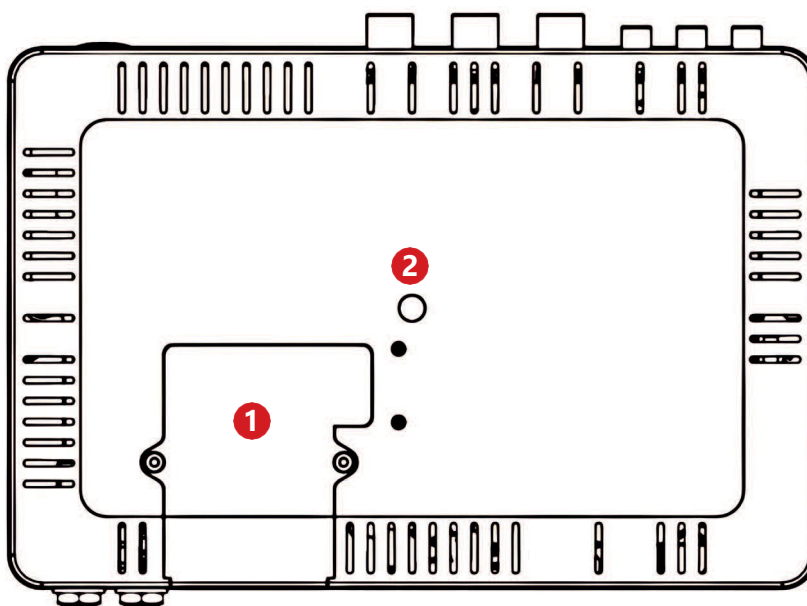
Top Panel

1. **10.1-Inch Full HD LCD Touchscreen:** Provides a high-resolution display for system information, VST host controls, and other interface functions.



Bottom Panel

1. Battery Compartment: Houses the removable 4900mAh battery.
2. Microphone stand thread: UNC 3/8-16 thread for microphone stand compatibility.





TH-U Software by Overloud

The Octave HS-1 comes pre-installed with TH-U (Octave version) by Overloud, a powerful guitar amp and effects suite which includes:

AMP MODELS

Darkface '65 (US) modelled on Fender Twin
Jazz 12'o modelled on Roland JC-120
Modern (US) CH2 modelled on Mesa Dual Rectifier
Overloud Prog Rock '75 (UK) modelled on JCM800
Slo 88 (US) Lead modelled on Soldano x88r
Top30 (UK) Bright modelled on Vox AC30 Top Boost

CABINET MODELS

1x12 Clst UK
2x12 Slo 12K
2x12 Jazz 12'o (JP)
2x12 OB Darkface '65 (US)
2x12 OB Green (UK)
2x12 OB Top30 (UK)
4x12 Modern (US)
4x12 Vintage (UK)

PLUS THE FOLLOWING

DELAY REVERBS

D-Delay
Tape Delay
D-Reverb
Room Rev

MODULATIONS

CHR-2
9-O'PHASER
Filter Flanger
UniVibrato

OVERDRIVE

SDriveOne
Tube Nine

OTHER EFFECTS

Octaver
Parametric EQ
Parametric EQ (4 bands)
Quiet
RSS Compressor
Cry Maybe Wah
Volume Pedal
RIG PLAYER AND 10 RIGS

The Rig Player is the TH-U component which reproduces the captured Rigs.

In addition to the Rig Player there are a batch of 10 Rigs created with various overdrive and amp combinations.

PRESETS

There is a bank of 30 presets ranging on different musical styles, created with the above models.

Gig Performer Software by Deskew

The Octave HS-1 comes pre-installed with Gig Performer (Octave version) by Deskew, a powerful VST host with unsurpassed stability depended upon by the world's biggest live performers. HS-1 owners can upgrade Gig Performer to the full version where special bundle options are available exclusively for our customers. For a complete list of the Gig Performer features included with the HS-1 please consult your user's manual or send an email to: info@octavetech.eu

Bluetooth Footswitch

The Octave HS-1 includes a versatile Bluetooth footswitch, designed to provide hands-free control over your VST software. For more detailed instructions and customization options, please consult your user's manual or send an email to: info@octavetech.eu

Audio Settings & Software

- Advanced audio settings such as sample rate, buffer size, and routing options can be accessed on your PC through the Audio Control Panel.
- Users can record and edit audio using Reaper, which comes installed with each unit for evaluation purposes. Users can also download other DAW software as desired (not included).



MIDI Integration

- Connect your MIDI devices using the USB ports on the rear panel or right panel or use a USB-to-MIDI cable.

Network Connectivity

- Connect to the internet using the Ethernet port for a wired connection or use the built-in Wi-Fi for wireless connectivity.

Direct Monitoring

- The Octave HS-1 supports direct monitoring, allowing you to hear your input signal with zero latency. Activate direct monitoring through the Direct Monitoring Switch (9) Front Panel.

Complete Users Guide

- In addition to this Technical Specifications sheet, a complete Users Guide and how-to video is available at the Windows 11 desktop of each HS-1 device and online at www.octavetech.eu